

# RESEARCH FACILITATORS

Questions related to your research program? Need assistance with Grant development? Look no further! Your friendly departmental research facilitator is your first point of contact

NAME



(306) 966-#

TITLE/ DEPARTMENT

<u>Erin Barbour-Tuck</u>	#1183	Anesthesiology, Perioperative Medicine & Pain Management
<u>Bruna Bonavia-Fisher</u>	#2211	Biomedical Sciences
<u>Tracy Wilson-Gerwing</u>	(306)655-2810	Emergency Medicine
<u>Ozlem Sari</u>	#6648	Medicine
<u>Kristine Hunter</u>	#8316	School of Rehabilitation Science
<u>Tova Dybvig</u>	(306)844-1229	Pediatrics
<u>Darren Nickel</u>	(306)655-8651	Physical Medicine and Rehabilitation
<u>Mariam Alaverdashvili</u>	(306)844-1302	Psychiatry
<u>Karen Mosier</u>	#8935	Surgery
<u>Mark Milne</u>		Pathology, Ophthalmology, Obstetrics & Gynecology, Oncology, Medical Imaging, Family Medicine

## INVOLVEMENT IN GRANT DEVELOPMENT

### INITIAL

- Discuss with applicant how to address the funding agency goals and expectations
- Help the researcher to develop an outline of her/his grant application
- Review for clearness, and logical flow of ideas; provide suggestions on how to improve presentation of the grant; proofread; review letters of support, CV, and CV attachments

### FINAL

- Re-read proposals after the suggestions (of the external reviewers for tri-council grants) have been incorporated
- Help with the budget development providing advice based on University and agency policies (eligibility of expenses) and provide comments on budget justification attachments
- Check on adherence to funding agency guidelines
- Check for eligibility of matching funds and overhead
- Liaise with funding agency (for programme-specific questions)
- Liaise with Research Services

# CONTACT LIST

NAME



(306) 966-#

TITLE/ DEPARTMENT

## LIAISON LIBRARIANS

<u>Catherine Boden</u>	#2931	Pharmacy; Rehabilitation Science; SCPOR
<u>Erin Watson</u>	#7327	Clinical Medicine Sciences
<u>Vicky Duncan</u>	#6023	Community Health & Epi; Dentistry; Public Health; Biomedical Sciences
<u>Susan Murphy</u>	#6022	Veterinary Medicine; Kinesiology; OneHealth

## STATISTICAL SUPPORT

<u>Marissa Alarcon</u>	#7920	Clinical Research Support Unit (CRSU)
<u>Supriya Arora</u>	(306)655-3351	Clinical Trial Support Unit (CTSU)

## RESEARCH ETHICS

<u>Caitlin Prebble</u>	#1854	Biomedical Ethics Facilitator
<u>Nick Reymond</u>	#2084	Behavioral Ethics Facilitator

## RESEARCH ACCELERATION & STRATEGIC INITIATIVES

<u>Leah Johnson</u>	#7742	Associate Director, RASI
<u>Ronda Appel</u>	#1459	Research Support Specialist, RASI
<u>Cameron Berg</u>	#2998	Research Support Specialist, RASI

## SHA OPERATION APPROVAL

<u>Shawna Weeks</u>	(306)655-1442	Research Approval Coordinator
---------------------	---------------	-------------------------------

### GRANTS REPOSITORY

Visit USask's [Grants Repository homepage](#) for examples of successful grant applications or to upload NSERC and SSHRC grant applications!

### FUNDING OPPORTUNITIES

Want to stay up-to-date on the latest funding news?

1. Sign up for the [Hello OVDR](#) newsletter for funding announcements.
2. Subscribe to the University's [listservs](#) which will send automatic e-mails when competitions are announced, or when the internal deadlines are circulated.
3. Access the research funding opportunities database at the U of S by visiting the [Research website](#) or [UnivRS](#).

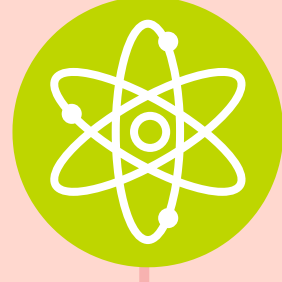
### SCPOR



*Saskatchewan Center for Patient Oriented Research*

### OVDR

For questions regarding the operational aspects of your research including but not limited to internal fund management, infrastructure or equipment, senior leadership questions, research impact or to find additional researcher resources, please visit the [OVDR website](#) or contact [ovdr@usask.ca](mailto:ovdr@usask.ca)



# OVERVIEW OF THE GRANT SUBMISSION PROCESS



Download the pdf of your completed Application Package



Visit **UnivRS** and login using your NSID



In the top right, click on **+ Add new > Project > Project Application**



Click on **Externally Funded**



Complete all fields marked with a \*



Click on the **Documents** Menu tab and upload your Project Scheme under **Final Project Documents**



When all \* are filled, click **Save and Close**



Select **Submitted for Approval** and click **Done**



Send an email to your department head to alert them to approve the application in UnivRS!

## PLEASE NOTE:

- All grant applications need to be dropped off at RASI 5 working days prior to the Agency's deadline for compliance review.
- You will receive a compliance review from RASI via e-mail.
- You cannot submit your application to the funding agency until you have addressed the compliance review comments.
- If the funding agency requires a signed copy you must drop the signature page at all the offices required by the funding agency.
- To check which office has approved your application:
- Click the **Approval and Log** tab. It will say: *For Approval by Department Head*, or *For Approval by Dean*.
- If it has already gone through the academic approvals, it will say *For Review by Approval Coordinator* or *For Review by Specialist*.

