


RESEARCH FACILITATORS

Questions related to your research program? Need assistance with Grant development? Look no further! Your friendly departmental research facilitator is your first point of contact

NAME	 (306) 966-#	TITLE/ DEPARTMENT
<u>Darcie Earle</u>	#1183	Anesthesiology, Perioperative Medicine and Pain Management
<u>Bruna Bonavia-Fisher</u>	#2211	Anatomy, Physiology, and Pharmacology (APP) and Biochemistry, Microbiology, and Immunology (BMI)
<u>Maryam Madani Larijani</u>	#7812	Community Health and Epidemiology (On Maternity leave until April 2025)
<u>Tracy Wilson</u>	(306)655-2810	Emergency Medicine
<u>Ozlem Sari</u>	#6648	Medicine
<u>Tova Dybvig</u>	(306)844-1229	Pediatrics
<u>Darren Nickel</u>	(306)655-8651	Physical Medicine and Rehabilitation
<u>Mariam Alaverdashvili</u>	(306)844-1302	Psychiatry
<u>Karen Mosier</u>	#8935	Surgery
<u>Mark Milne</u>	(519)873-0308	Pathology, Ophthalmology, Obstetrics and Gynecology, Oncology, Medical Imaging, Family Medicine Covering Community Health and Epidemiology until April 2025

INVOLVEMENT IN GRANT DEVELOPMENT

INITIAL

- Discuss with applicant how to address the funding agency goals and expectations
- Help the researcher to develop an outline of her/his grant application
- Review for clearness, and logical flow of ideas; provide suggestions on how to improve presentation of the grant; proofread; review letters of support, CV, and CV attachments

FINAL

- Re-read proposals after the suggestions (of the external reviewers for tri-council grants) have been incorporated
- Help with the budget development providing advice based on University and agency policies (eligibility of expenses) and provide comments on budget justification attachments
- Check on adherence to funding agency guidelines
- Check for eligibility of matching funds and overhead
- Liaise with funding agency (for programme-specific questions)
- Liaise with Research Services

CONTACT LIST

NAME



(306) 966-#

TITLE/ DEPARTMENT

LIAISON LIBRARIANS

<u>Catherine Boden</u>	#2931	Rehabilitation Science
<u>Erin Watson</u>	#7327	Clinical Medicine; Biomedical Sciences
<u>Vicky Duncan</u>		Community Health & Epidemiology; Dentistry; Public Health
<u>Heather Tornblom</u>	#1968	Kinesiology; Pharmacy and Nutrition

STATISTICAL SUPPORT

<u>Ha Le</u>		Clinical Research Support Unit (CRSU)
--------------	--	---------------------------------------

RESEARCH ETHICS

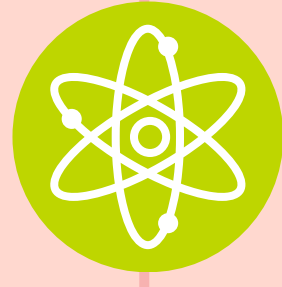
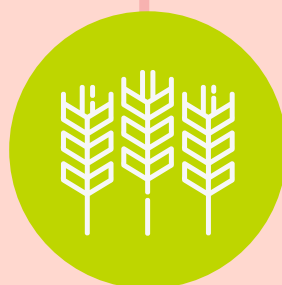
<u>Caitlin Prebble</u>	#1854	Biomedical Ethics Specialist
<u>Melanie Bayly</u>	#4390	Behavioral Ethics Coordinator

RESEARCH ACCELERATION & STRATEGIC INITIATIVES

<u>Danielle Ellis</u>	#7978	Associate Director, RASI
<u>Centaine Raginski</u>	#1459	Research Support Specialist, RASI
<u>Cameron Berg</u>	#2998	Research Support Specialist, RASI

SHA OPERATION APPROVAL

<u>Sharleen Maley</u>	(306)655-1442	Research Approval Coordinator
-----------------------	---------------	-------------------------------



GRANTS REPOSITORY

Visit USask's [Grants Repository homepage](#) for examples of successful grant applications or to upload NSERC and SSHRC grant applications!

FUNDING OPPORTUNITIES

Want to stay up-to-date on the latest funding news?

1. Sign up for the [Hello OVDR](#) newsletter via OVDR@usask.ca for funding announcements.
2. Subscribe to the University's [listservs](#) which will send automatic e-mails when competitions are announced, or when the internal deadlines are circulated.
3. Access the research funding opportunities database at the U of S by visiting the [Research website](#) or [UnivRS](#).

SCPOR



Saskatchewan Center for Patient Oriented Research

OVDR

For questions regarding the operational aspects of your research including but not limited to internal fund management, infrastructure or equipment, senior leadership questions, research impact or to find additional researcher resources, please visit the [OVDR website](#) or contact ovdr@usask.ca

OVERVIEW OF THE GRANT SUBMISSION PROCESS



Download the pdf of your completed Application Package



Visit **UnivRS** and login using your NSID



In the top right, click on **+ Add new > Project > Project Application**



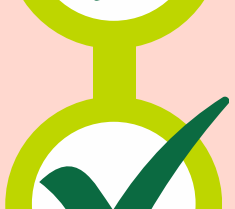
Click on **Externally Funded**



Complete all fields marked with a *



Click on the **Documents** Menu tab and upload your Project Scheme under **Final Project Documents**



When all * are filled, click **Save and Close**



Select **Submitted for Approval** and click **Done**



Send an email to your department head to alert them to approve the application in UnivRS!

PLEASE NOTE:

- All grant applications need to be submitted 5 working days prior to the Agency's deadline for compliance review.
- You will receive a compliance review from RASI via e-mail.
- You cannot submit your application to the funding agency until you have addressed the compliance review comments.
- If the funding agency requires a signed copy you must obtain signatures from the offices required by the funding agency.
- To check which office has approved your application:
- Click the **Approval and Log** tab. It will say: *For Approval by Department Head*, or *For Approval by Dean*.
- If it has already gone through the academic approvals, it will say *For Review by Approval Coordinator* or *For Review by Specialist*.



RESOURCES FOR CLINICAL RESEARCHERS

COLLEGE RESOURCES

CLINICAL TRIAL SUPPORT UNIT

The CTSU is joint initiative of the University of Saskatchewan's College of Medicine, the Saskatchewan Health Authority and the Saskatchewan Cancer Agency. As a centralized clinical research resource, the CTSU provides many services to clinical investigators, such as:

- Review and negotiation of confidential disclosure agreements
- Negotiation of contracts and study budgets
- Preparing and submitting ethics applications and regulatory documents
- Clinical research nurse and clinical research coordinator services

Support requests can be initiated by completing the [CTSU Intake Form](#).

CLINICAL RESEARCH SUPPORT UNIT

The CRSU provides multi-faceted research assistance to all faculty members, residents, students, and researchers within the College of Medicine. Investigators across the basic, medical, clinical, and population health sciences can access support for study design, sample size/power calculation, data management, analysis, and manuscript revision. Requests to review funding applications are also welcome.

Support requests can be initiated by completing the [CRSU Intake Form](#).

DEPARTMENTAL RESEARCH SUPPORT

Our research facilitators and coordinators support faculty members in their research endeavors by identifying opportunities and assisting faculty with the development of funding proposals for research projects and programs, and strategic initiatives important to the departments and College of Medicine. [Find your departmental support on our website.](#)

OVDR INITIATIVES

MINGLING MINDS

The Mingling Minds seminar series was created to promote and facilitate interdisciplinary collaborations for health research within the University of Saskatchewan by facilitating researchers to share and exchange knowledge, expertise, and technologies, particularly between clinical and basic science researchers.

The program has shifted from a monthly seminar to hosting larger, periodic retreats and workshops.

DEAN'S SUMMER RESEARCH PROJECTS

The Dean's Summer Research Projects facilitate undergraduate medical students' exposure to scientific research.

Supervisors apply in November with project ideas. If selected, supervisors select a first or second year undergraduate medical student to conduct the project work alongside them over the summer (May-August).

COLLEGE OF MEDICINE RESEARCH AWARDS

CoMRAD provides researchers up to \$30,000 as seed funding for novel pilot and/or feasibility studies that will facilitate future applications to provincial, national, and international funding opportunities. CoMRAD is announced annually in May with application deadlines in August.

Clinician Career Development Stream – The OVDR has earmarked funding for clinical faculty members who are new or returning to research and have < 0.1 FTE (four hours / week) research time.

UNDERSTANDING OVERHEAD

Your quick reference guide to understanding Overhead or Indirect Costs of Research (ICR)



WHAT IS OVERHEAD (ICR)?

Overhead or ICR is the institutional costs related to research.

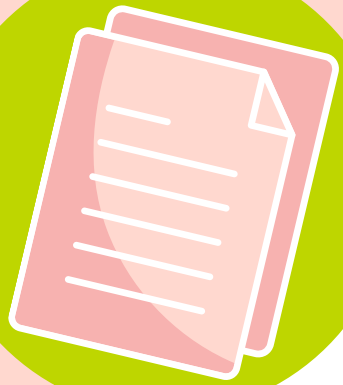
They include:

- Facilities & Equipment
- Administrative Costs of Supporting Research
- Regulation & Safety Compliance



WHEN DO I NEED TO BUDGET FOR ICR?

During the creation of your budget for any grant or clinical research opportunity, it is important to read the funding guidelines around ICR and incorporate it into your application. Sub-transfers are also subject to ICR, therefore check in with the ovdr@usask.ca if you are unsure.



WHAT DO I DO IF I HAVE ALREADY SUBMITTED MY APPLICATION & DID NOT ACCOUNT FOR ICR?

Please connect with the OVDR (ovdr.funding@usask.ca) and we will work with you and the Research Acceleration & Strategic Initiatives office to determine if ICR is required and facilitate further discussions with the funder.

WHAT IS THE USASK ICR RATE (NON-TRI-AGENCY)?

The rate varies slightly based on the type of grant or contract.

- Research Agreements - 25%
- Human Clinical Trial Agreements - 30%
- Tri-Agency - 0%
- NIH Grants - 8%
- Other - Some funders or External Agencies set their own overhead or ICR rate in which case we default to that rate.



WHO DO I CONNECT WITH IF I HAVE QUESTIONS?

If you have questions about ICR and would like to gather more information please reach out to the OVDR team at ovdr.funding@usask.ca and we would be happy to help you.

